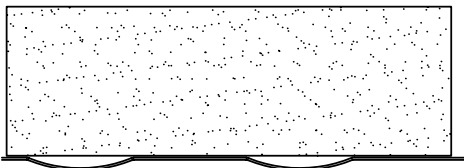
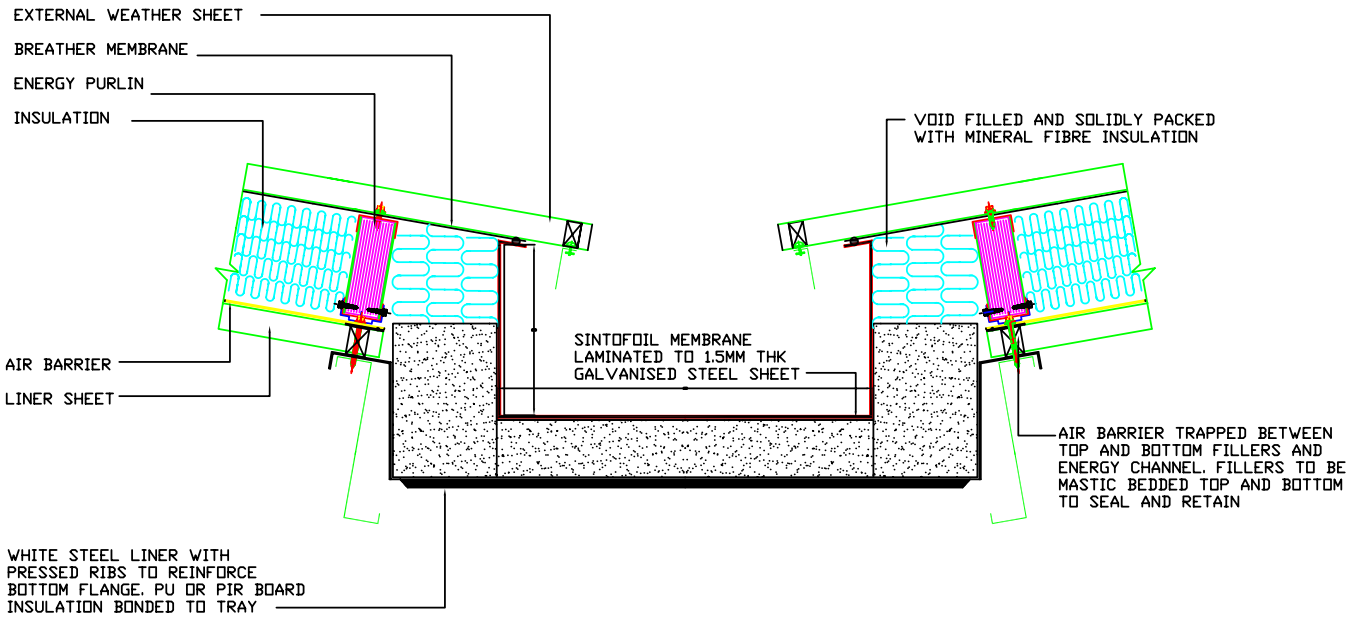


Integrated Polymer Systems (UK) Ltd. This drawing may not be reproduced, multiplied or submitted to the inspection of third parties without our permission. Written dimensions to be preferred. All dimensions to be checked on site. All rights reserved.



PAN FLOOR RIBBED TO GENERATE ADDITIONAL STRENGTH

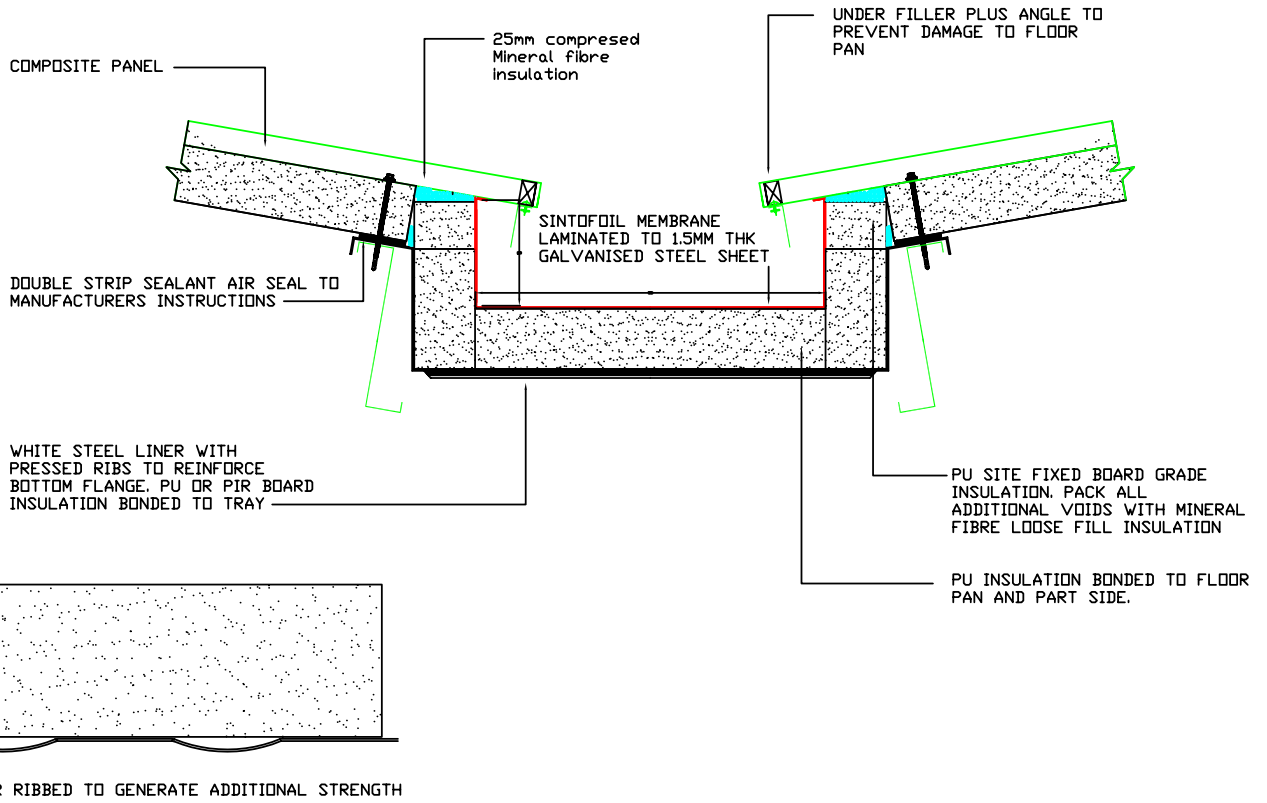
Do not scale



Integrated Polymer Systems (UK) Ltd
 (Northern Office)
 Allen House, Harmby Road
 Leyburn, North Yorkshire
 DL8 5NS

Date	Dwg No	Rev.	Scale
drawn by	checked		
Project	VALLEY GUTTER		
Subject	BUILT-UP		

Integrated Polymer Systems (UK) Ltd. This drawing may not be reproduced, multiplied or submitted to the inspection of third parties without our permission. Written dimensions to be preferred. All dimensions to be checked on site. All rights reserved.



Do not scale



Integrated Polymer Systems (UK) Ltd
 (Northern Office)
 Allen House, Harmby Road
 Leyburn, North Yorkshire
 DL8 5NS

Date	Dwg No	Rev.	Scale
drawn by	checked		
Project	VALLEY GUTTER		
Subject	COMPOSITE		